



13 Grey Street West Hindmarsh SA

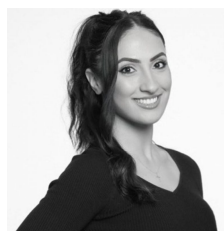
4 1 3

LARGE BLUESTONE FRONTED VILLA ON THE PARK! In the heart of West Hindmarsh, where comfort and convenience seamlessly combine. Situated next-door to Wallman Reserve, this 1920's family home offers an ideal blend of spacious living and urban accessibility. The 697m2 (approx) corner allotment is sure to offer great development potential (STCC)

Price : \$ 1,150,000
Building Size : 137 sqm
Land Size : 697 sqm
View : <https://www.adcorpgroup.com.au/sale/sa/western-beachside-suburbs/west-hindmarsh/residential/house/8081923>

Featuring: 4 bedrooms. 1 bathroom. Formal lounge. Family room. Timber kitchen with adjacent dining room. Huge rear yard with ample parking. 3m x 12m garage (approximately). Combustion heating. Ducted evaporative cooling. Tenanted until February 2025.

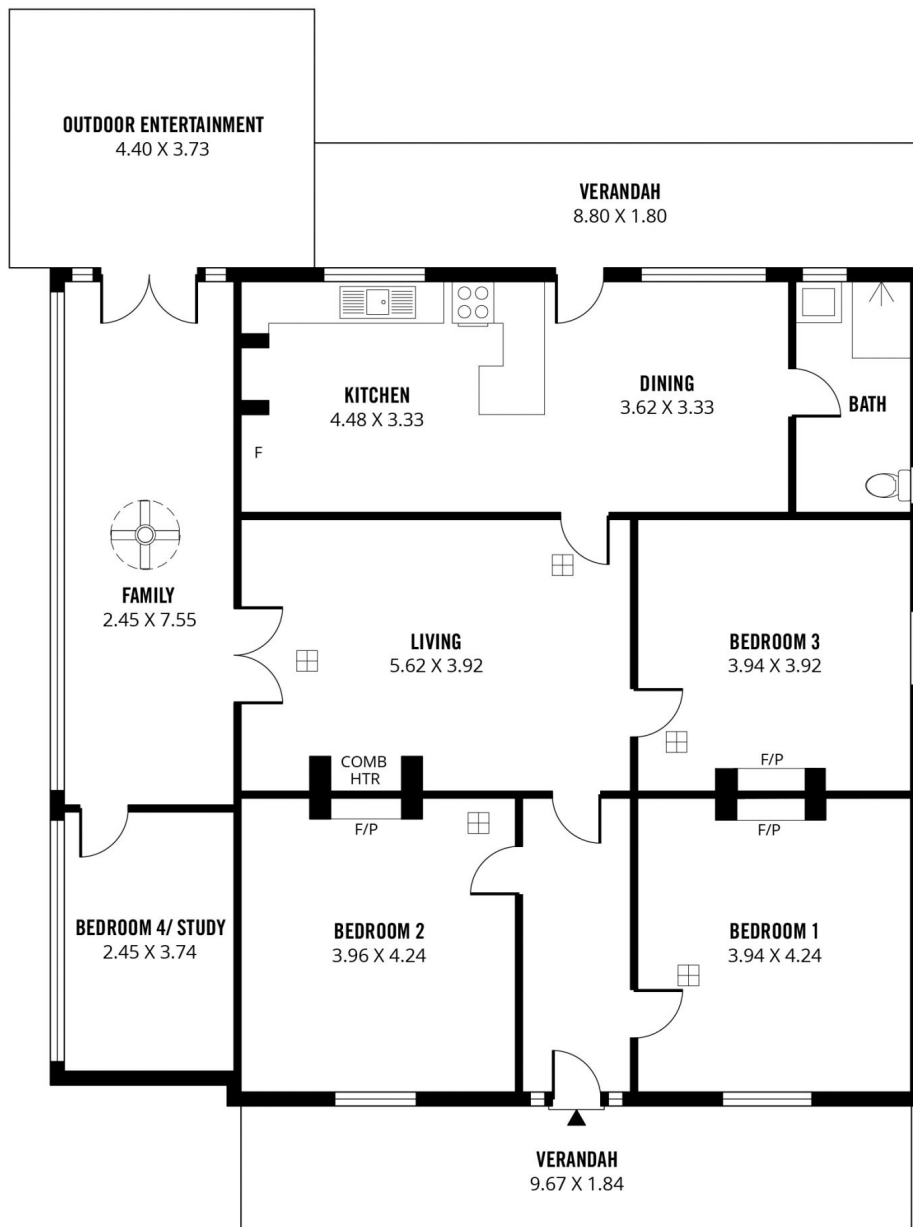
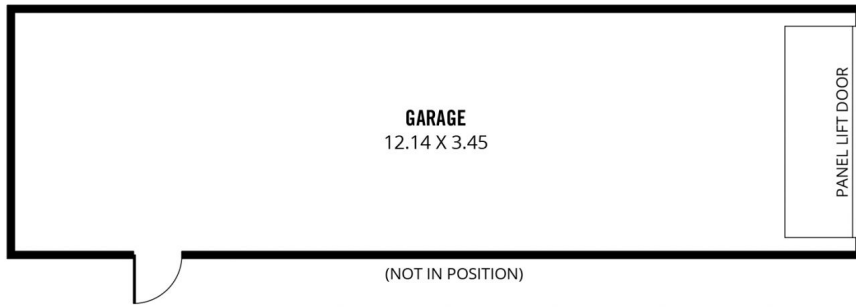
With Welland Plaza, Brickworks Shopping Centre, St Josephs Primary School, Thebarton Senior College, local



Madeline Oppedisano
(08) 8361 3333



Frank Werner
(08) 8361 3333



247m²

TOTAL

152m²

Living

34m²

Verandah

45m²

Garage

16m²

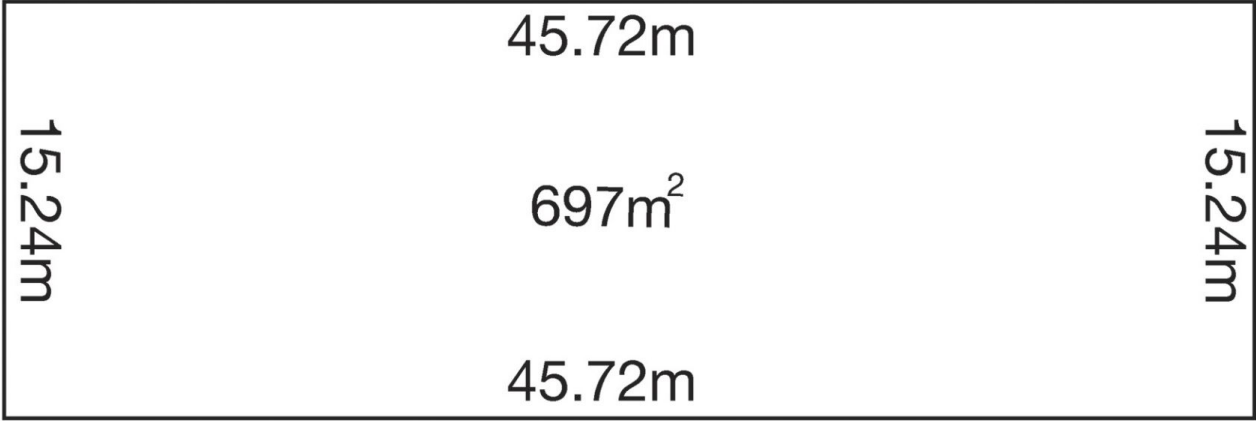
Outdoor
Entertainment



Scale in metres. This drawing is for illustration purposes only. All measurements are approximate and details intended to be relied upon should be independently verified.

Produced by **The Fotobase Group**

GREY AVENUE



MC DONNELL AVENUE