

## 59 Main Street Lockleys SA

4 2 2

Welcome to Riverstone: Adelaide's newest bespoke address nestled along Linear Park in the prestigious and ever popular suburb of Lockleys.

With 24 of the available 26 blocks already sold in this exclusive and premium land release, Adcorp Property Group is proud to now present to you this brand new architecturally designed home which is ready for your immediate enjoyment.

No need to engage with the builder or planner anymore as the hard work has been done for you in this modern luxurious masterpiece.

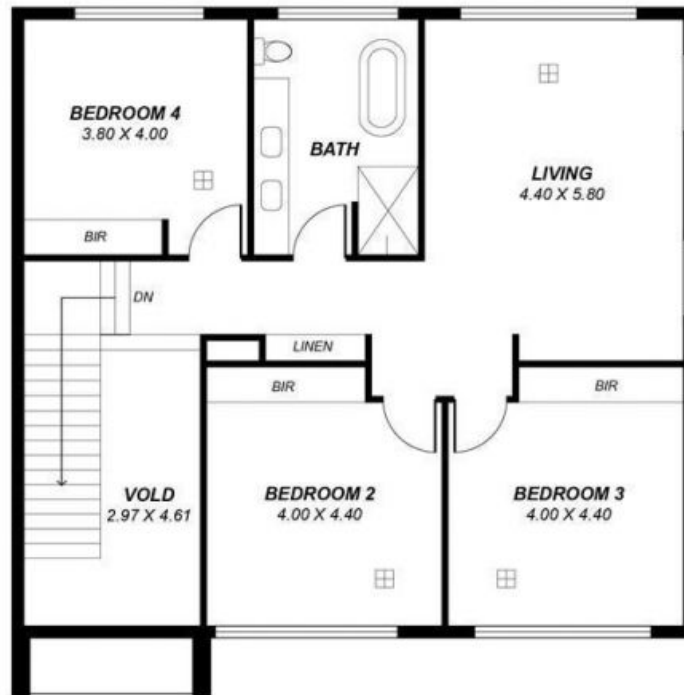
Features include:

- 403sqm (approx.) of designer living across 2 levels
- 4 double bedrooms

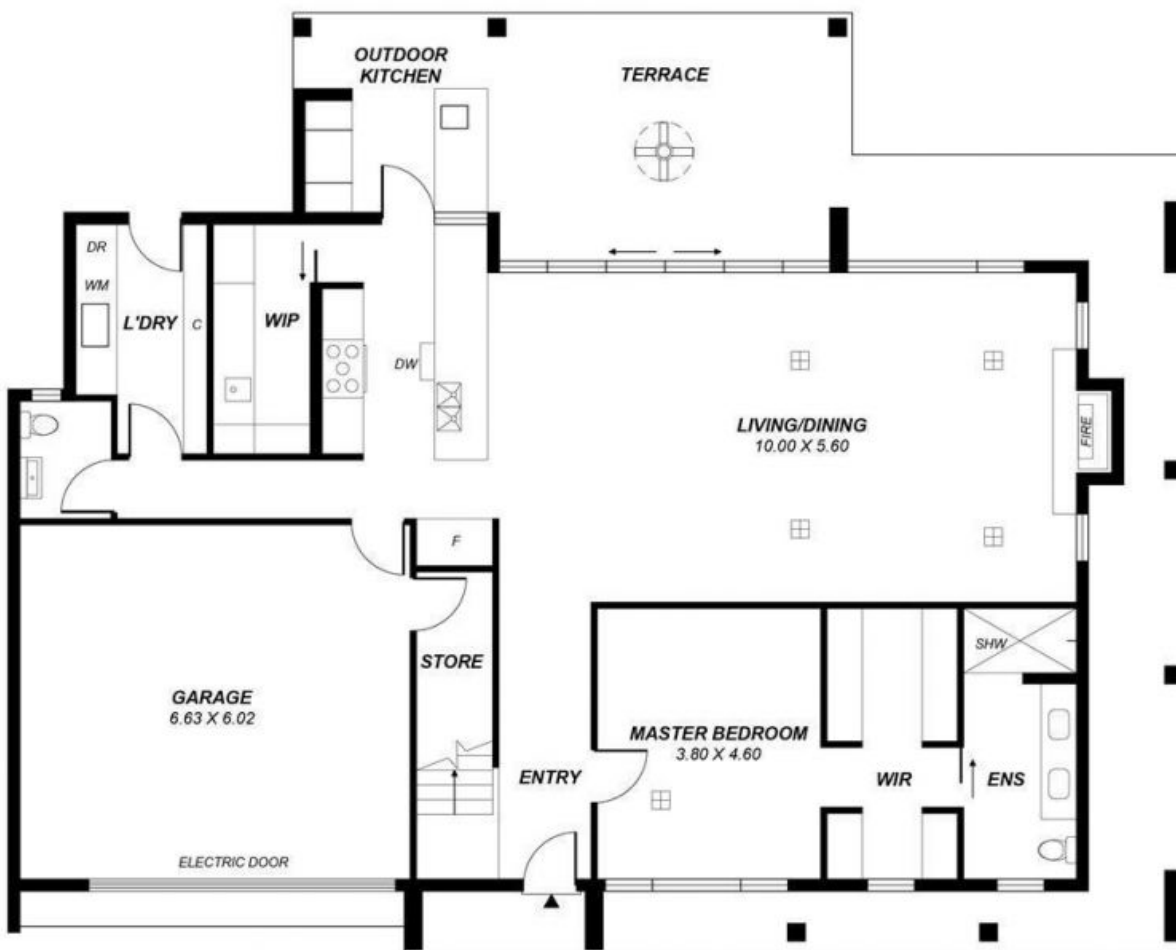
[For full version visit the website](https://www.adcorpgroup.com.au/sale/sa/western-beachside-suburbs/lockleys/residential/house/6890961)

**Type** : House

**View** : <https://www.adcorpgroup.com.au/sale/sa/western-beachside-suburbs/lockleys/residential/house/6890961>



**FIRST FLOOR**



**GROUND FLOOR**

Area	m <sup>2</sup>
Ground Floor Living	156.23
First Floor Living	122.77
Terrace/Outdoor Kitchen	81.39
Garage	43.42
<b>Total</b>	<b>403.81</b>